



Centre Hospitalier Universitaire Vaudois (CHUV)

Faculté de Biologie et de Médecine de l'Université de Lausanne



UNIL | Université de Lausanne
Faculté de Biologie et de Médecine

Quantitative Mass Spectrometry Facility (qMSF)



Dr. Bertrand Rochat, PhD, Project Leader,

Head of Quantitative Mass Spectrometry Facility, BH18, CHUV, Rte du Bugnon, CH – 1011 Lausanne

qMSF is a platform of mass spectrometer instruments of the *Faculté de Biologie et de Médecine* at CHUV. The platform is open to anyone who needs this technology. The Project Leader in charge of this facility is Dr. Bertrand Rochat

bertrand.rochat@chuv.ch



The Goals of qMSF are :

to help all researchers who need mass spectrometers

to develop the own qMSF research ...

to perform routine analyses ...

in ...
fundamental,
biomedical,
and clinical
research

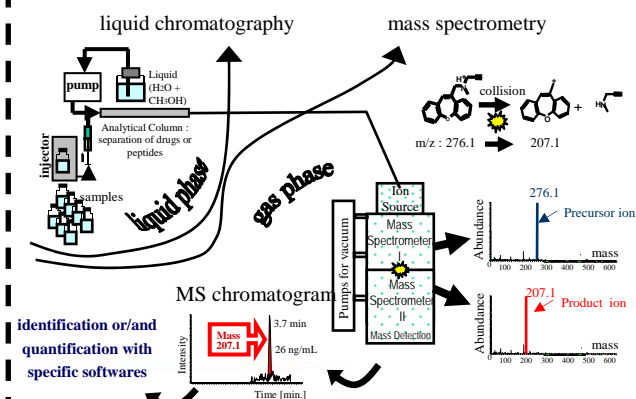
What can a Mass Spec do for YOU ??

Mass spectrometers are the best instruments to quantitate and identify drugs, endogenous molecules and proteins.

At qMSF mass spectrometers can :

- ⇒ quantitate drugs, endogenous molecules and proteins
- ⇒ identify drug metabolites or proteins
- ⇒ perform many other investigations

What are LC-MS instruments ?



Some examples of expertise at qMSF

to help partners in their research demanding MS technology

- Quantification of caspofungin in patients' plasma
- Quantification of neuropeptide Y in plasma (in progress)
- Characterization of fatty acids, leukotriene arachidonic acid in cellular extracts (in progress)
- Quantification of protease inhibitors in patients' plasma
- Quantification of imatinib in patients' plasma and WBC
- Identification of peptide degradation by-products
- Etc ...

to develop the own qMSF Research

- Resistance to anti-cancer agents mediated by drug metabolism in cancer cells
- Structure elucidation of drug metabolite by the determination of fragmentation pathways

to perform routine analyses

- Quantitation of metanephrines in patients' plasma

Some partners ...

- Pharmacologie Clinique at CHUV
- Maladie Infectieuse at CHUV
- Xigen SA at Lausanne
- Centre Intégréatif de Génomique at UNILausanne



At qMSF, we have a Triple Quadrupole and a Linear Ion Trap MS instruments



quadrupoles Q1, Q2 and Q3
Ion source
quadrupole

For feasibility and evaluation, Please, **contact :**

DO YOU HAVE SAMPLES TO ANALYSE ?

Dr. Bertrand Rochat, Project Leader,
Head of Quantitative Mass Spectrometry Facility,
Dpt. de Recherche, BH18, CHUV,
CH – 1011 Lausanne
E-mail : bertrand.rochat@chuv.ch

