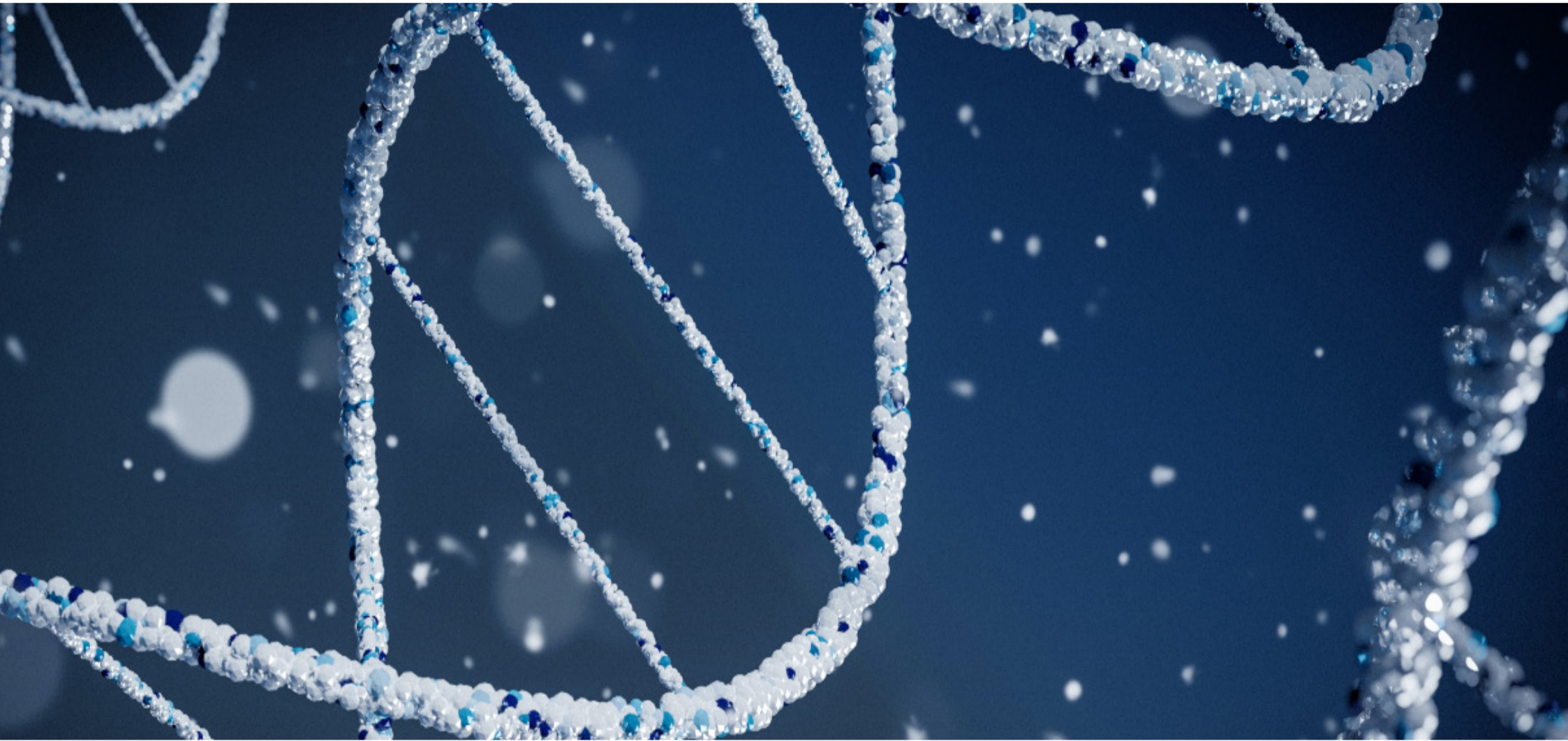


Interdisciplinary PhD Programme in **Cancer & Immunology**

For talented and motivated students
from all around the world



Apply NOW!!!

SUMMER SELECTION 2024

Deadline: June 2nd 2024

Interviews: July 2nd and 3rd 2024

Research Topics

- Cell signalling
- Cell death and proliferation
- Cancer Immunology
- Cancer homeostasis and development
- Immunoproteomics
- Infectious diseases and vaccines
- Innate Immunity and inflammation
- Adaptive immunity and autoimmunity
- Tissue and developmental immunology
- Immunometabolism
- Immunoengineering

APPLICATION and more INFORMATIONS : WWW.UNIL.CH/CANCER-IMMUNOLOGY


UNIL | Université de Lausanne
Faculté de biologie
et de médecine

*Department of Fundamental Oncology
Department of Immunobiology
Ludwig Institute for Cancer Research*

