

Welcome

# Quality and Safety in Oncology Nursing

George Coukos, MD, PhD, Professor  
Director, Department of Oncology, CHUV  
Director, Ludwig Cancer Research Center

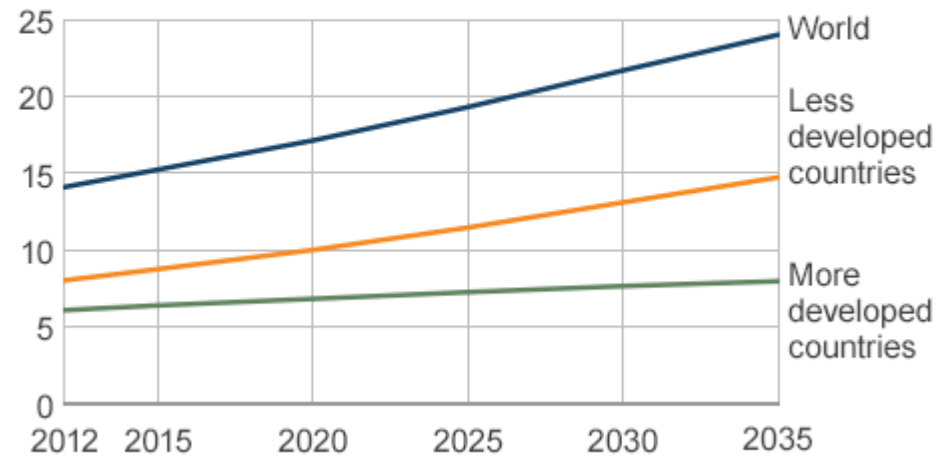
[george.coukos@chuv.ch](mailto:george.coukos@chuv.ch)

[http://www.chuv.ch/oncologie/onc\\_home.htm](http://www.chuv.ch/oncologie/onc_home.htm)

# Cancer a global concern

## Predicted global cancer cases

Cases (millions)



Source: WHO GloboCan

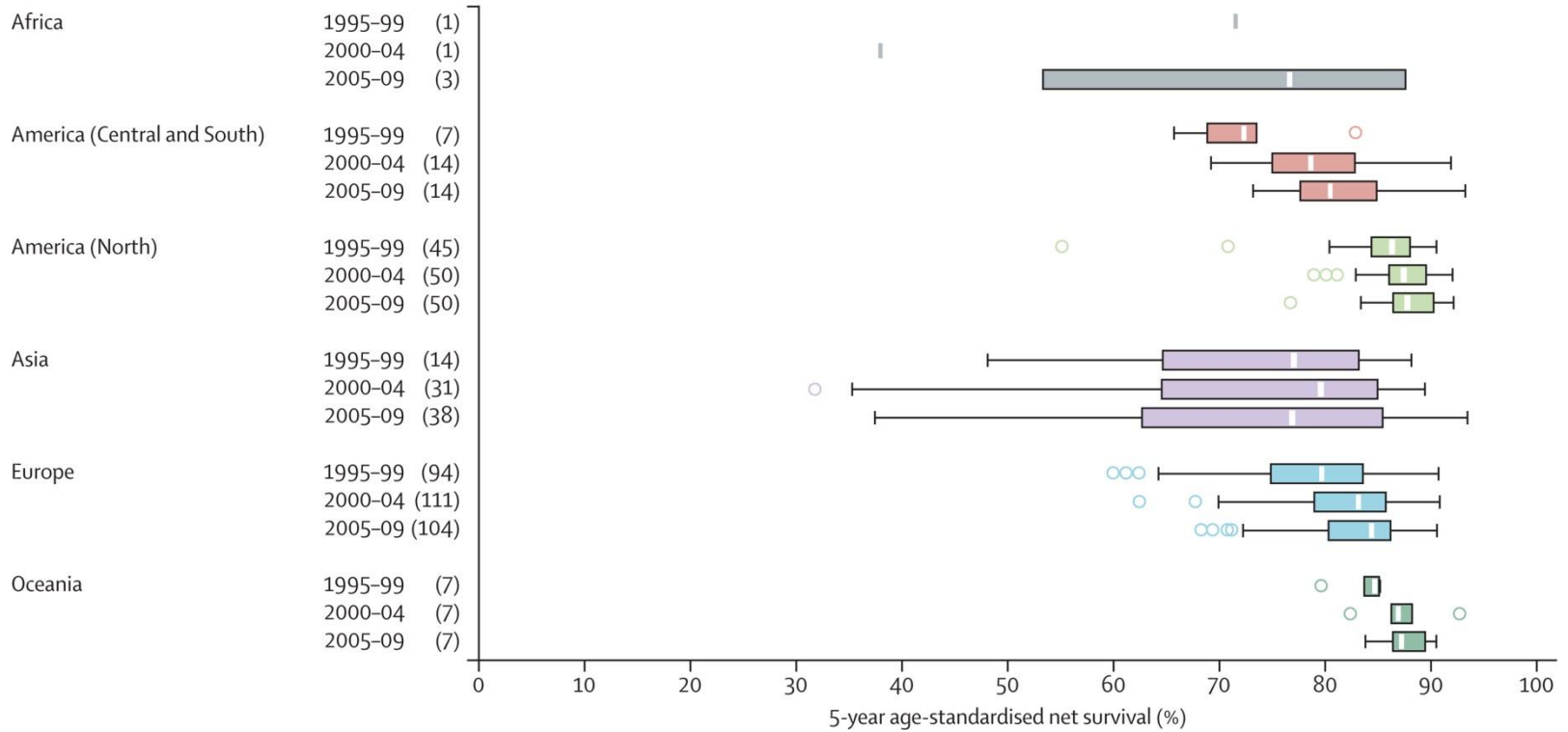


Stewart BW, Wild CP, editors (2014). *World Cancer Report 2014*. Lyon, France: International Agency for Research on Cancer.

Figure 4

# 5-year net survival estimates for women diagnosed with breast cancer in 228 cancer registries

## Breast cancer (women)

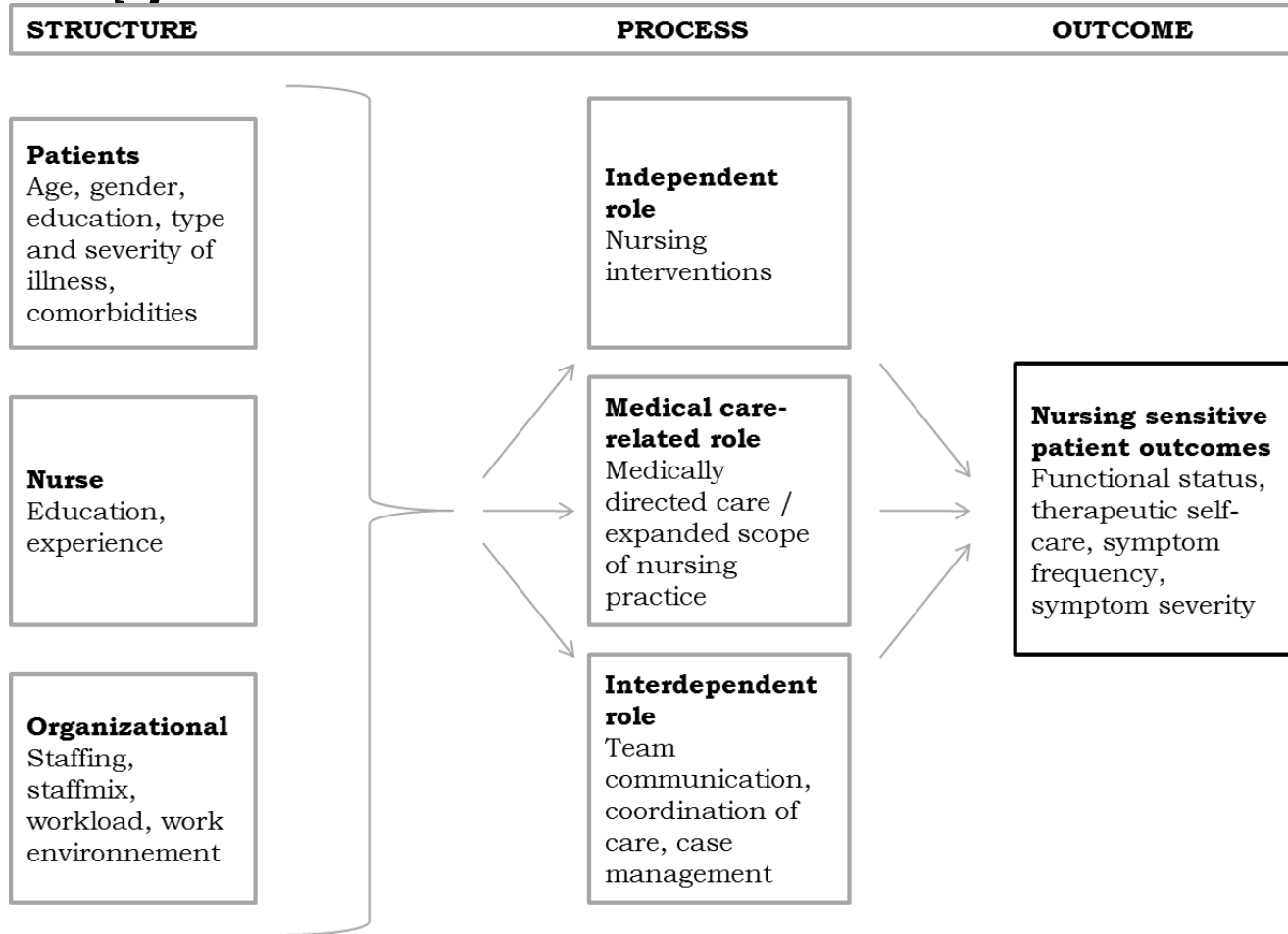


Allemani et al. Global surveillance of cancer survival 1995–2009: analysis of individual data for 25 676 887 patients from 279 population-based registries in 67 countries (CONCORD-2) *The Lancet* DOI: (10.1016/S0140-6736(14)62038-9)

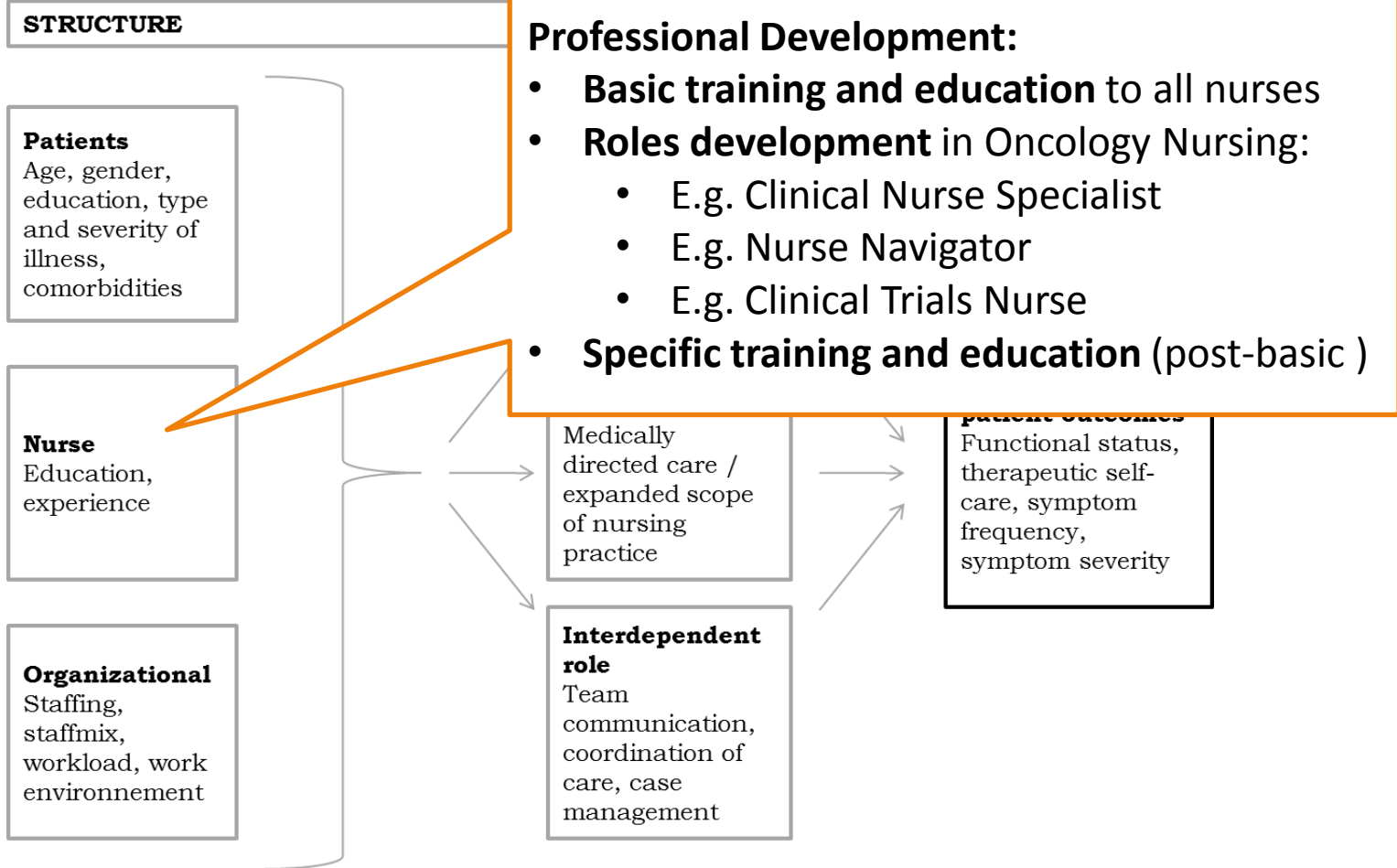
# What is quality of care?

- «Doing the right thing at the right time in the right way with the right people» (ASQ, 2013)
- High-quality care “increases the likelihood of desired health outcomes and is consistent with current professional knowledge.” (IOM, 1990)

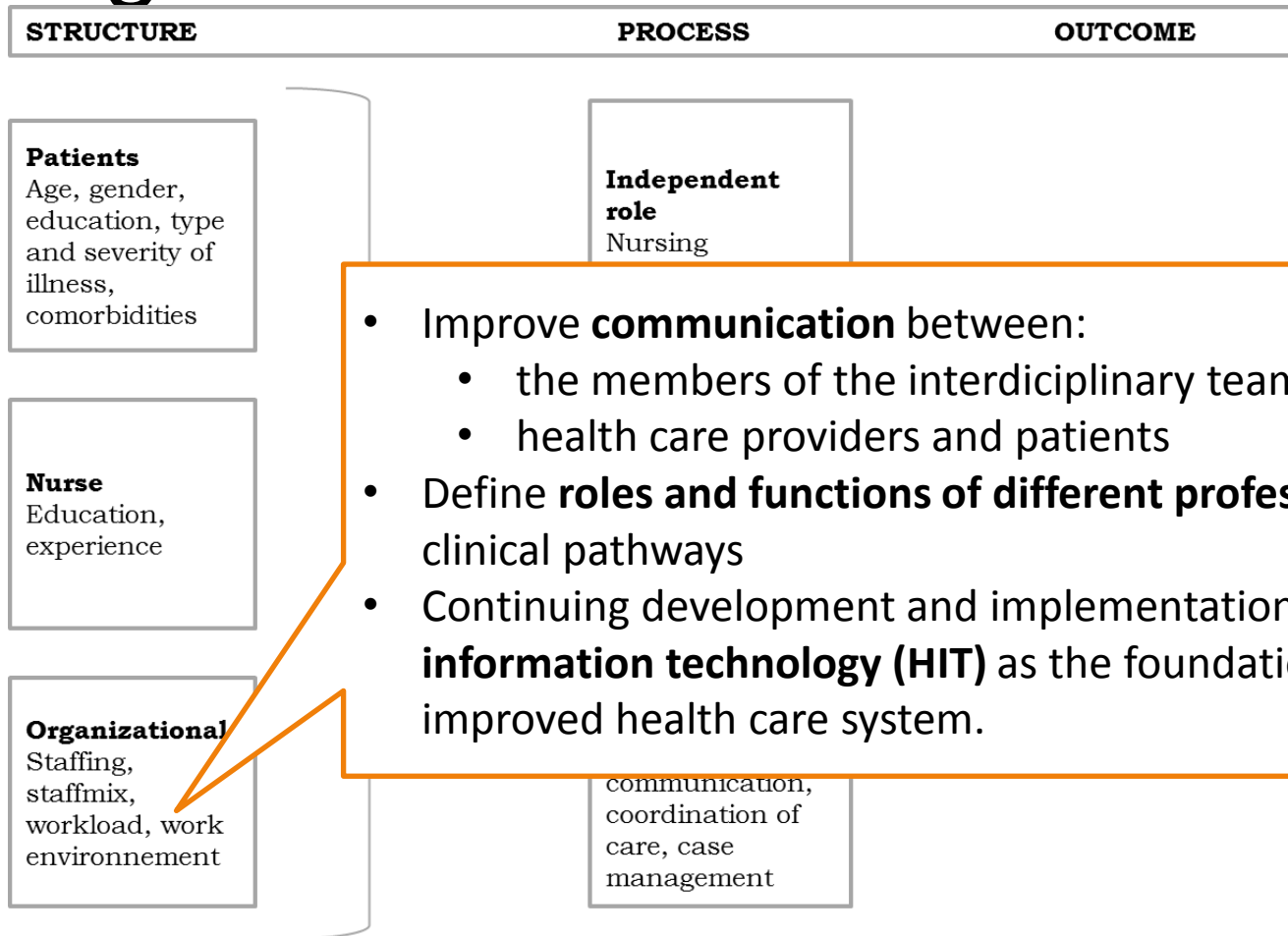
# Categories of quality of care in nursing



# Categories of quality of care in nursing



# Categories of quality of care in nursing



Doran, D. 2011: *Nursing role effectiveness model*. In *Nursing Outcomes*, Jones & Bartlett, Sudbury

# «What is measured improves»

STRUCTURE	PROCESS	OUTCOME
<b>Patients</b> Age, gender, education, type and severity of illness, comorbidities	<b>Independent role</b> Nursing interventions	<b>Nursing sensitive patient outcomes</b> Functional status, therapeutic self-care, symptom frequency, symptom severity
<b>Nurse</b> Education, experience	<b>Medical care-related role</b> Medically directed care, expanded scope of nursing practice	
<b>Organizational</b> Staffing, staffmix, workload, work environment	<b>Interdependent role</b> Team communication, coordination of care, case management	

Quality Criteria  
Quality Indicators  
Audits  
Benchmarks